

**BDKRB2 Polyclonal Antibody**  
**Purified Rabbit Polyclonal Antibody (Pab)**  
**Catalog # AP58023****Specification**

---

**BDKRB2 Polyclonal Antibody - Product Information**

Application	IHC-P, IHC-F, IF, ICC, E
Primary Accession	<a href="#">P30411</a>
Reactivity	Rat
Host	Rabbit
Clonality	Polyclonal
Calculated MW	43 KDa
Physical State	Liquid
Immunogen	KLH conjugated synthetic peptide derived from human Bdkrb2
Epitope Specificity	51-150/391
Isotype	IgG
<b>Purity</b>	
affinity purified by Protein A	
Buffer	0.01M TBS (pH7.4) with 1% BSA, 0.02% Proclin300 and 50% Glycerol.
SUBCELLULAR LOCATION	Cell membrane; Multi-pass membrane protein.
SIMILARITY	Belongs to the G-protein coupled receptor 1 family. Bradykinin receptor subfamily. BDKRB2 sub-subfamily.
SUBUNIT	Forms a complex with PECAM1 and GNAQ. Interacts with PECAM1.
Important Note	This product as supplied is intended for research use only, not for use in human, therapeutic or diagnostic applications.

**Background Descriptions**

Bradykinin increases vascular permeability, dilates blood vessels, contracts non-vascular smooth muscle, and causes pain. This product detects a receptor for bradykinin. The receptor is associated with G proteins that activate a phosphatidylinositol-calcium second messenger system. Bradykinin B2 receptor expression has been reported in blood, brain, eye, kidney, liver, lung, prostate, skin, small intestine, synovium, uterus, and vessel. ESTs have been isolated from colon, connective tissue, heart, heart/melanocyte/uterus, kidney, lung, placenta, and thyroid libraries.

**BDKRB2 Polyclonal Antibody - Additional Information****Gene ID** 624**Other Names**

B2 bradykinin receptor, B2R, BK-2 receptor, BDKRB2, BKR2

**Target/Specificity**

Ubiquitous. Widespread in normal smooth muscle tissue and neurons.

**Dilution**

IHC-P~~N/A  
IHC-F~~N/A  
IF~~1:50~200  
ICC~~N/A  
E~~N/A

**Format**

0.01M TBS(pH7.4), 0.09% (W/V) sodium azide and 50% Glyce

**Storage**

Store at -20 °C for one year. Avoid repeated freeze/thaw cycles. When reconstituted in sterile pH 7.4 0.01M PBS or diluent of antibody the antibody is stable for at least two weeks at 2-4 °C.

**BDKRB2 Polyclonal Antibody - Protein Information**

**Name** BDKRB2

**Synonyms** BKR2

**Function**

Receptor for bradykinin. It is associated with G proteins that activate a phosphatidylinositol-calcium second messenger system.

**Cellular Location**

Cell membrane; Multi-pass membrane protein

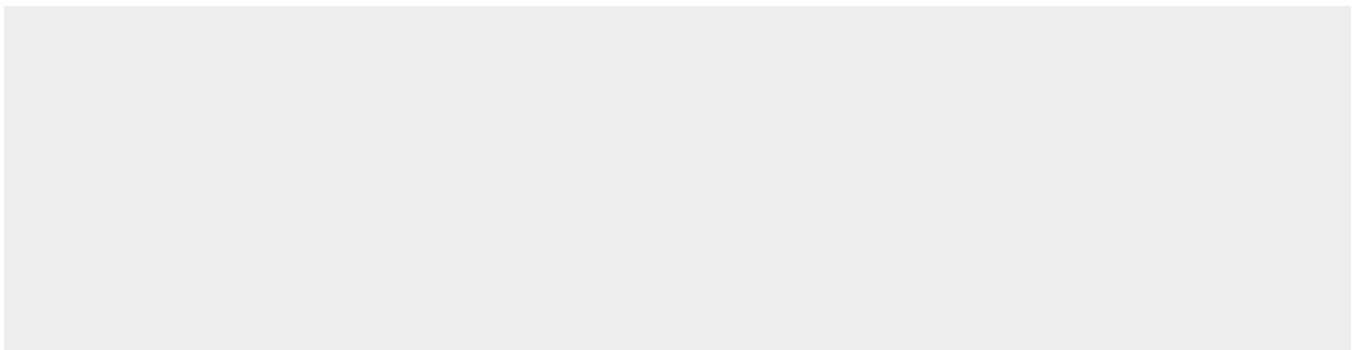
**Tissue Location**

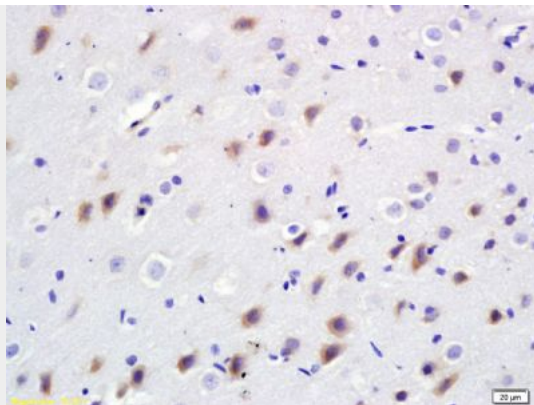
Ubiquitous. Widespread in normal smooth muscle tissue and neurons.

**BDKRB2 Polyclonal Antibody - Protocols**

Provided below are standard protocols that you may find useful for product applications.

- [Western Blot](#)
- [Blocking Peptides](#)
- [Dot Blot](#)
- [Immunohistochemistry](#)
- [Immunofluorescence](#)
- [Immunoprecipitation](#)
- [Flow Cytometry](#)
- [Cell Culture](#)

**BDKRB2 Polyclonal Antibody - Images**



Tissue/cell: rat brain tissue; 4% Paraformaldehyde-fixed and paraffin-embedded;

Antigen retrieval: citrate buffer ( 0.01M, pH 6.0 ), Boiling bathing for 15min; Block endogenous peroxidase by 3% Hydrogen peroxide for 30min; Blocking buffer (normal goat serum,C-0005) at 37°C for 20 min;

Incubation: Anti-Bdkrb2/B2R Polyclonal Antibody, Unconjugated(bs-2422R) 1:200, overnight at 4°C, followed by conjugation to the secondary antibody(SP-0023) and DAB(C-0010) staining